



COLLEGE/UNIVERSITY | RENOVATION/ADAPTIVE REUSE/
RESTORATION | LIBRARY/MEDIA CENTER

Georgia State University Library North Addition + Renovation

Atlanta, GA

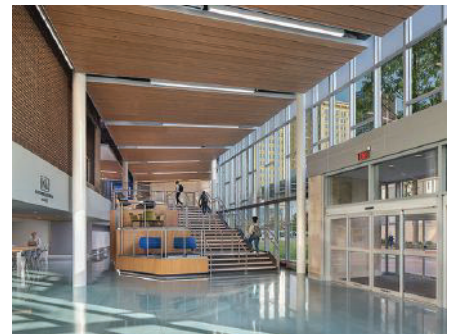


In the heart of Georgia State University's Atlanta campus (GSU), Library North serves as the main student library facility immediately adjacent to a new campus Greenway. Serving more than 10,000 students daily, the Greenway offered great presence for a new entry pavilion to become a vibrant destination and campus pedestrian pathway for Library North.

The new entry incorporates a monumental stair with three-tiered study areas, three informal meeting/study zones, two elevators and a secondary security desk. GSU requested areas outside of its main security desk to be open for all, as a public amenity. The variety of accessible, desirable spaces offer students and visitors a daylight-filled, safe public space to co-mingle, read, study, gather in small groups, and hang-out.

Building materials were carefully balanced with campus standards, blending existing library terrazzo with a new polished concrete floor, a new wood-look acoustical ceiling, and stainless-steel cable railings to optimize views. All are highly durable, energy efficient products and smart sustainable decisions, resulting in a bright inviting space able to withstand the rigors of everyday use.

This new amenity brought interesting challenges for a re-envisioned library. Implementing the new Greenway in keeping with the masterplan required removal of a



raised plaza, where one previously entered the library. In 2020, the design team worked with the library and campus leadership to create a reimagined library entry pavilion that would help energize the Greenway, both day & night, expand informal meeting areas, and continue to serve a vast number of visitors. The design team worked within the constraints of the library's utility services to preserve a primary campus fiber hub, substantially allowing capital funds to be used for new construction, not demolition.

Adding delight to the project through careful management of the budget and decision-making, the design team modified a masterplan idea into well-crafted architecture for the GSU campus and Library North. A new rooftop terrace offers a new desirable destination to be shared with campus and the local community.

COLLINS COOPER CARUSI ARCHITECTS

3391 Peachtree Rd., NE, Suite 400
Atlanta, GA 30326
collinscoopercarusi.com
Samuel R. Cooper, AIA, Principal-in-Charge
404/873-0001

DESIGN TEAM

Samuel R. Cooper, Principal-in-Charge
Fiona Grandowski, Principal | Interiors
Brett Norton, Project Manager
Wood Dennis, Emerging Professional

OWNER/CLIENT

Georgia State University
Atlanta, GA
Gowri Pillai, Assistant Director, Facilities Design and
Construction Services

KEY STATS

Grades Served: Post-Secondary
Capacity of Students/Occupants: 1,800
Size of Site: 1.42 acres
Gross Area of Bldg./Space: 5,600 gsf
Space per Student: 3.5 sq. ft.
Cost per Student: \$2,140
Square Foot Cost: \$688
Project Cost: \$3,853,220
Occupation Date: 7/30/2021

PHOTOGRAPHY: ©2022 CREATIVE SOURCES PHOTOGRAPHY, INC.