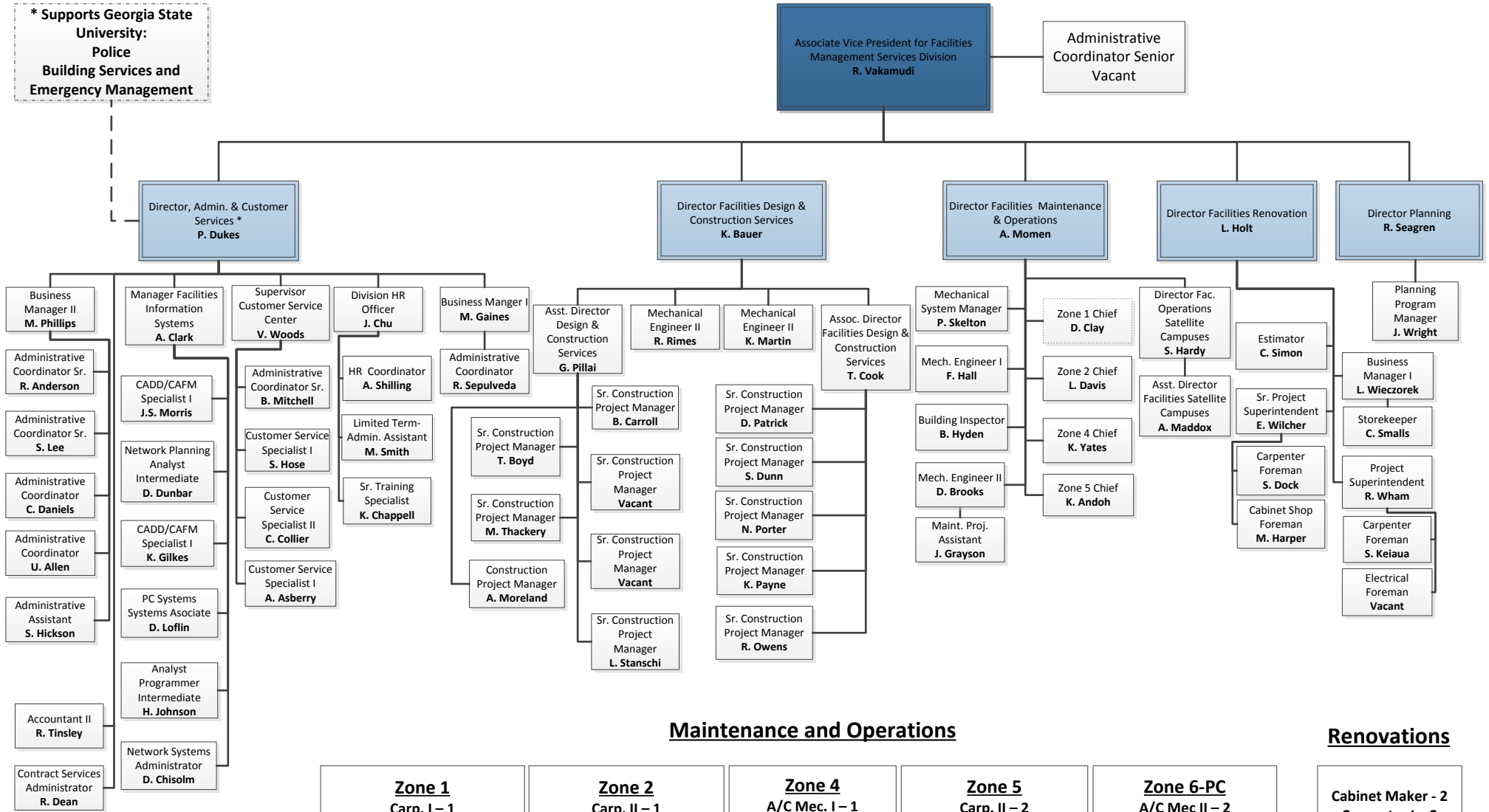


# Facilities Management Services Division

\* Supports Georgia State University:  
Police  
Building Services and  
Emergency Management



## Maintenance and Operations

## Renovations

**Zone 1**  
Carp. I – 1  
Elec. II – 2  
Facil. Coord. – 1  
Plumber II – 3  
MEI II – 1  
Mech. Equip. Insp. – 1  
SKD Trades Worker – 3  
Asst. Zone Chief – 1

**Zone 2**  
Carp. II – 1  
Elec. II – 2  
Plumber II – 2  
MEI II – 2  
SKD Trades Worker – 2  
Asst. Zone Chief – 1

**Zone 4**  
A/C Mec. I – 1  
Carp. II – 3  
Elec. I – 1  
Elec. II – 3  
Facil. Coord. – 1  
Plumber I – 1  
Plumber II – 2  
Mech. Equip. Insp. – 9  
SKD Trades Worker – 3  
Asst. Zone Chief – 1

**Zone 5**  
Carp. II – 2  
Elec. II – 2  
Plumber II – 2  
Mech. Equip. Insp. – 4  
SKD Trades Worker – 3  
Painter III – 3  
Painter II – 2  
Painter – 1  
Asst. Zone Chief – 1

**Zone 6-PC**  
A/C Mec II – 2  
Elec. I – 1  
Elec. II – 3  
Painter II – 1  
Painter III – 1  
Plumber – 1  
SKD Trades Worker – 10  
Asst. Zone Chief – 1  
Secretary-1

Cabinet Maker - 2  
Carpenter I – 3  
Carpenter II – 4  
Elec. I – 1  
Elec. II – 2  
Painter II – 2  
Trades Helper – 3